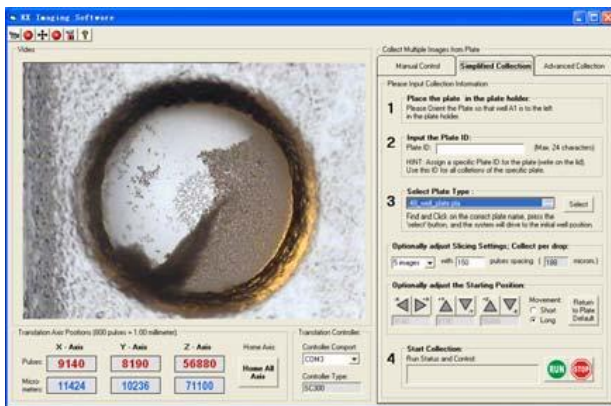
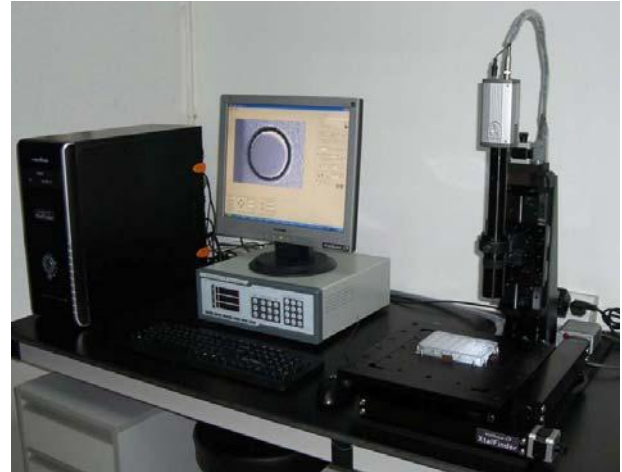


XtalFinder

Automatic High-speed Protein Crystallization Imaging System

CAT No. CBS-01

Automatic, high-speed protein crystallization imaging system, is suitable for imaging SBS standard plates. The system allows both manual snapshots of single drop and automatically scanning and imaging a SBS plate. The scanning and imaging a 96 well plate needs only about 2 minutes.



- Highly automatic imaging system, suitable for any available SBS footprint plate.
- Manual control interface provides complete control of movement and snapshot functions.
- Accurate X, Y, Z-translation with a smallest step size of 1.25 μm .
- High speed imaging needs only 2 min to scan a 96 well plate.
- Control software is built on PC window operation system. Its GUI is clear and user-friendly.

- 0.65 to 4.5X zoom lens unit (additional 2X lens included).
- VGA quality (768x576 pixels) color CCD camera.
- LED Cold light source.
- Single or multiple slicing option for imaging.
- Simple GUI input to allow user to add new type of plates for imaging.



A Serie of images collected at ~0, 54, 90, 144h after setting up crystallization tray

