



MAD2 with p31 Protein Crystal

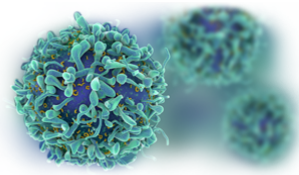
Catalog: CBCRY03

PRODUCT INFORMATION

| | |
|-------------------------------|---|
| Name | MAD2 with p31 Protein Crystal |
| Cat No. | CBCRY03 |
| Fragment | Full length Residues 36-274 |
| Protein Description | Mad2 complexed with p31(comet) |
| Background | The crystal structure of the Mad2-p31(comet) complex is reported. The C-terminal region of Mad2 that undergoes rearrangement in different Mad2 conformers is a major structural determinant for p31(comet) binding, explaining the specificity of p31(comet) toward Mad1- or Cdc20-bound Mad2. p31(comet) adopts a fold strikingly similar to that of Mad2 and binds at the dimerization interface of Mad2. Thus, p31(comet) exploits the two-state behavior of Mad2 to block its activation by acting as an "anti-Mad2." |
| Protein Classification | cell cycle |
| Structure Weight | 105471.24 Da |
| Method | X-Ray Diffraction |
| Resolution | 2.30 Å |
| Reference | Yang, M., Li, B., Tomchick, D.R., Machius, M., Rizo, J., Yu, H., Luo, X. p31comet blocks Mad2 activation through structural mimicry. Cell(Cambridge,Mass.)2007; 131: 744-755 |

USAGE GUIDELINES

| | |
|------------------|---|
| General | Avoid excessive mixing or shocking to prevent aggregation. Long term storage above -80°C may result in aggregate formation. |
| Storage | Short term: +2°C to +8°C Long term: -80°C |
| Stability | n.a. |



Freezing

Can be frozen, but avoid multiple freeze/thaw cycles.
