



BPGM Protein Crystal

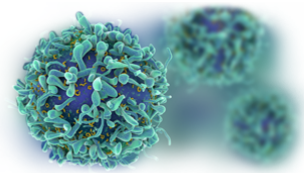
Catalog: CBCRY13

PRODUCT INFORMATION

Name	BPGM Protein Crystal
Cat No.	CBCRY13
Fragment	Full length
Protein Description	2,3-bisphosphoglycerate mutase
Background	Bisphosphoglycerate mutase is an erythrocyte-specific enzyme catalyzing a series of intermolecular phosphorylation group transfer reactions. Its main function is to synthesize 2,3-bisphosphoglycerate, the allosteric effector of hemoglobin.
Protein Classification	Isomerase
Structure Weight	63399.57 Da
Method	X-Ray Diffraction
Resolution	1.5 Å
Ligand Chemical Component	3-phosphoglyceric acid; 2,3-diphosphoglyceric acid; cyclohexylammonium ion
Reference	Wang, Y., Liu, L., Wei, Z., Cheng, Z., Lin, Y., Gong, W. (2006) Seeing the process of histidine phosphorylation in human bisphosphoglycerate mutase. J.Biol.Chem. 281: 39642-39648

USAGE GUIDELINES

General	Avoid excessive mixing or shocking to prevent aggregation. Long term storage above -80°C may result in aggregate formation.
Storage	Short term: +2°C to +8°C Long term: -80°C
Stability	n.a.

**Freezing**

Can be frozen, but avoid multiple freeze/thaw cycles.
