



AR Protein Crystal

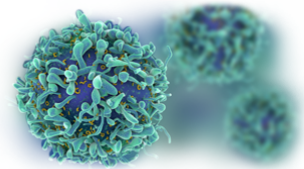
Catalog: CBCRY23

PRODUCT INFORMATION

Name	AR Protein Crystal
Cat No.	CBCRY23
Fragment	Residues 669-918
Protein Description	Androgen Receptor
Background	Androgen receptor (AR) is a ligand-inducible steroid hormone receptor that mediates androgen action, determining male sexual phenotypes and promoting spermatogenesis. As the androgens play a dominant role in male sexual development and function, steroidal androgen agonists have been used clinically for some years. However, there is a risk of potential side effects and most steroidal androgens cannot be dosed orally, which limits the use of these substances. 1,2-Dihydro-6-N,N-bis(2,2,2-trifluoroethyl)amino-4-trifluoromethyl-2-quinolinone (LGD2226) is a synthetic nonsteroidal ligand and a novel selective AR modulator.
Protein Classification	Ligand Binding Protein
Structure Weight	29541.62 Da
Method	X-Ray Diffraction
Resolution	2.8Å
Ligand Chemical Component	6-[Bis(2,2,2-Trifluoroethyl)Amino]-4-(Trifluoromethyl)quinolin-2(1H)-one.
Reference	Wang, F., Liu, X.-Q., Li, H., Liang, K.-N., Miner, J.N., Hong, M., Kallel, E.A., van Oeveren, A., Zhi, L., Jiang, T. (2006) Structure of the ligand-binding domain (LBD) of human androgen receptor in complex with a selective modulator LGD2226 ACTA CRYSTALLOGR.,SECT.F 62: 1067-1071

USAGE GUIDELINES

General	Avoid excessive mixing or shocking to prevent aggregation. Long term storage above -80°C may result in aggregate formation.
---------	-----------------------------------------------------------------------------------------------------------------------------



Storage	Short term: +2°C to +8°C
	Long term: -80°C
Stability	n.a.
Freezing	Can be frozen, but avoid multiple freeze/thaw cycles.