



MASA Protein Crystal

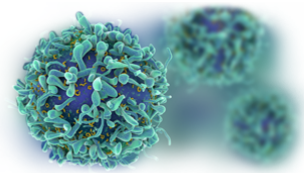
Catalog: CBCRY26

PRODUCT INFORMATION

Name	MASA Protein Crystal
Cat No.	CBCRY26
Fragment	Full length
Protein Description	Enolase-phosphatase E1
Background	Enolase-phosphatase E1 (MASA) is a bifunctional enzyme in the ubiquitous methionine salvage pathway that catalyzes the continuous reactions of 2,3-diketo-5-methylthio-1-phosphopentane to yield the aci-reductone metabolite using Mg ²⁺ as cofactor. In this study, we have determined the crystal structure of MASA and its complex with a substrate analog to 1.7Å resolution by multi-wavelength anomalous diffraction and molecular replacement techniques, respectively.
Protein Classification	Hydrolase
Structure Weight	29316.11 Da
Method	X-Ray Diffraction
Resolution	1.7Å
Ligand Chemical Component	Selenomethionine
Reference	Wang, H., Pang, H., Bartlam, M., Rao, Z. (2005) Crystal Structure of Human E1 Enzyme and its Complex with a Substrate Analog Reveals the Mechanism of its Phosphatase/Enolase J.Mol.Biol. 348: 917-926

USAGE GUIDELINES

General	Avoid excessive mixing or shocking to prevent aggregation. Long term storage above -80°C may result in aggregate formation.
Storage	Short term: +2°C to +8°C Long term: -80°C

**Stability**

n.a.

Freezing

Can be frozen, but avoid multiple freeze/thaw cycles.