



# DNCL2A Protein Crystal

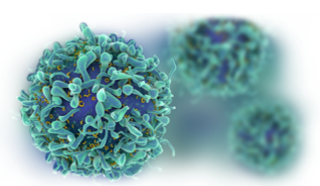
Catalog: CBCRY31

## PRODUCT INFORMATION

Name	DNCL2A Protein Crystal
Cat No.	CBCRY31
Fragment	Full length
Protein Description	Dynein Light Chain Dnlc2a
Background	The human light chain of the motor protein dynein, Dnlc2A, is also a novel TGF-beta-signaling component, which is altered with high frequency in epithelial ovarian cancer. It is an important mediator of dynein and the development of cancer, owing to its ability to bind to the dynein intermediate light chain (DIC) IC74 and to regulate TGF-beta-dependent transcriptional events.
Protein Classification	Transport Protein
Structure Weight	24324.71 Da
Method	X-Ray Diffraction
Resolution	2.10Å
Ligand Chemical Component	Cesium ion
Reference	Liu, J.-F., Wang, Z.-X., Wang, X.-Q., Tang, Q., An, X.-M., Gui, L.-L., Liang, D.-C. (2006) Crystal structure of human dynein light chain Dnlc2A: Structural insights into the interaction with IC74 Biochem.Biophys.Res.Comm. 349: 1125-1129

## USAGE GUIDELINES

General	Avoid excessive mixing or shocking to prevent aggregation. Long term storage above -80°C may result in aggregate formation.
Storage	Short term: +2°C to +8°C Long term: -80°C

**Stability**

n.a.

**Freezing**

Can be frozen, but avoid multiple freeze/thaw cycles.