

PDE2A Protein Crystal

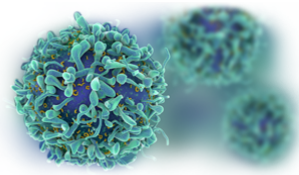
Catalog: CBCRY48

PRODUCT INFORMATION

Name	PDE2A Protein Crystal
Cat No.	CBCRY48
Fragment	Residues 215-900
Protein Description	Phosphodiesterase 2
Background	<p>The phosphodiesterases (PDEs) are a superfamily of enzymes that metabolically inactivate cAMP and cGMP to play key roles in both these aspects of regulation. There are 11 PDE gene families, which differ broadly in specificity and affinity for cAMP and cGMP. An isoform PDE2A2 is supposed to regulate mitochondrial cAMP levels and respiration.</p>
Protein Classification	Hydrolase
Structure Weight	158085.17 Da
Method	X-Ray Diffraction
Resolution	3.02 Å
Ligand Chemical Component	Mg ²⁺ Zn ²⁺
Reference	<p>Pandit J, Forman MD, Fennell KF, Dillman KS, Menniti FS. Mechanism for the allosteric regulation of phosphodiesterase 2a deduced from the x-ray structure of a near full-length construct. Proc.Natl.Acad.Sci.Usa (2009) 106 p.18225</p>

USAGE GUIDELINES

General	Avoid excessive mixing or shocking to prevent aggregation. Long term storage above -80°C may result in aggregate formation.
Storage	Short term: +2°C to +8°C Long term: -80°C



Stability

n.a.

Freezing

Can be frozen, but avoid multiple freeze/thaw cycles.
