

# PTP1B Protein Crystal

Catalog: CBCRY52

## PRODUCT INFORMATION

---

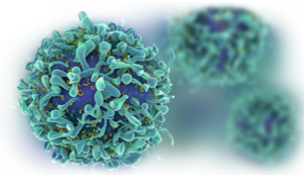
<b>Name</b>	PTP1B Protein Crystal
<b>Cat No.</b>	CBCRY52
<b>Fragment</b>	Catalytic domain
<b>Protein Description</b>	Protein Tyrosine Phosphatase, Non-receptor Type 1
<b>Background</b>	<p>Tyrosine-protein phosphatase non-receptor type 1 belongs to tyrosine phosphatase (PTP) family, which was isolated and identified based on its enzymatic activity and amino acid sequence. PTPs catalyze the hydrolysis of the phosphate monoesters specifically on tyrosine residues. Members of the PTP family share a highly conserved catalytic motif, which is essential for the catalytic activity. Tyrosine-protein phosphatase acts as a regulator of endoplasmic reticulum unfolded protein response. It mediates dephosphorylation of EIF2AK3/PERK, and also regulates the hepatocyte growth factor receptor signaling pathway.</p>
<b>Protein Classification</b>	Hydrolase
<b>Structure Weight</b>	37896.55 Da
<b>Method</b>	X-Ray Diffraction
<b>Resolution</b>	1.85 Å
<b>Ligand Chemical Component</b>	Mg <sup>2+</sup> , O-PHOSPHOTYROSINE
<b>Reference</b>	Puius YA, Zhao Y, Sullivan M, Lawrence DS, Almo SC, Zhang ZY. Crystal Structure of Protein Tyrosine Phosphatase 1B Complexed With Two Phosphotyrosine Molecules.

## USAGE GUIDELINES

---

<b>General</b>	Avoid excessive mixing or shocking to prevent aggregation. Long term storage above -80°C may result in aggregate formation.
<b>Storage</b>	Short term: +2°C to +8°C

---



Long term: -80°C

---

**Stability**

n.a.

---

**Freezing**

Can be frozen, but avoid multiple freeze/thaw cycles.

---