

PLK1 Protein Crystal

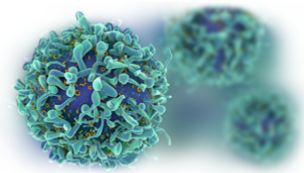
Catalog: CBCRY53

PRODUCT INFORMATION

Name	PLK1 Protein Crystal
Cat No.	CBCRY53
Fragment	Polo box domain
Protein Description	Polo-like Kinase 1
Background	<p>Polo-like kinase proteins acts by binding and phosphorylating proteins are that already phosphorylated on a specific motif recognized by the POLO box domains. The Ser/Thr protein kinase belongs to the CDC5/Polo subfamily. It is highly expressed during mitosis and elevated levels are found in many different types of cancer. Depletion of this protein in cancer cells dramatically inhibited cell proliferation and induced apoptosis; hence, it is a target for cancer therapy.</p>
Protein Classification	Transferase
Structure Weight	54544.60 Da
Method	X-Ray Diffraction
Resolution	2.20 Å
Reference	Cheng KY, Lowe ED, Sinclair J, Nigg EA, Johnson LN. The crystal structure of the human polo-like kinase-1 polo box domain and its phospho-peptide complex. Embo J. (2003) 22 p.5757

USAGE GUIDELINES

General	Avoid excessive mixing or shocking to prevent aggregation. Long term storage above -80°C may result in aggregate formation.
Storage	Short term: +2°C to +8°C Long term: -80°C
Stability	n.a.

**Freezing**

Can be frozen, but avoid multiple freeze/thaw cycles.
