

PLK4 Protein Crystal

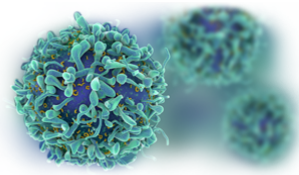
Catalog: CBCRY56

PRODUCT INFORMATION

Name	PLK4 Protein Crystal
Cat No.	CBCRY56
Fragment	Polo box domain
Protein Description	Polo-like Kinase 4
Background	<p>Polo-like kinase 4 (PLK4) belongs to the polo family of serine/threonine protein kinases. PLK4 localizes to centrioles, complex microtubule-based structures found in centrosomes, and regulates centriole duplication during the cell cycle. Three alternatively spliced transcript variants that encode different protein isoforms have been found for this gene. PLK4 is involved in trophoblast differentiation by phosphorylating HAND1, leading to disrupt the interaction between HAND1 and MDFIC and activate HAND1.</p>
Protein Classification	Transferase
Structure Weight	64844.43 Da
Method	X-Ray Diffraction
Resolution	2.25 Å
Ligand Chemical Component	SULFATE ION, ANP
Reference	Atwell S, Burley SK, Houle A, Leon B, Pelletier LA, Sauder JM. Crystal structure of plk4 kinase. No recorded citation in PubMed.

USAGE GUIDELINES

General	Avoid excessive mixing or shocking to prevent aggregation. Long term storage above -80°C may result in aggregate formation.
Storage	Short term: +2°C to +8°C Long term: -80°C



Stability

n.a.

Freezing

Can be frozen, but avoid multiple freeze/thaw cycles.
